

# HONZNAUX1



## Purpose

The SoundGate HONZNAUX1 lets you connect a Zune™ digital media player directly to the factory radio in the Acura/Honda vehicles listed below. The HONZNAUX1 supplies power, charges your Zune device, and allows for remote control of all Zune device functions (remote sold separately).



## Features

The SoundGate HONZNAUX1 utilizes sophisticated microprocessor control, ultra-reliable surface-mount construction, and advanced software design to flawlessly integrate with Acura/Honda audio systems. Audio from your Zune device and an additional auxiliary input can be selected from your factory radio's controls.

*The HONZNAUX1 works in the following vehicles:*

### ACURA

CL 2.2/2.3	1997-1999
CL 3.0/3.2	1997-2004
Integra	1992-2001
Legend	1992-1995
MDX	2001-2006
NSX	1992-2001
RL 3.5	1997-1998
RSX	2004-2006
TL 2.5/3.2	1996-2003
TSX	2004-2007
Vigor	1992-1996

### HONDA

Accord	1992-2002
Civic	1992-2005
CRV	1998-2006
Element	2003-2006
Insight	2000-2005
Odyssey	1995-2005
Pilot	2003-2007
Prelude	1992-2002
S2000	2000-2005

# Simple-fi.™

[www.soundgate.com](http://www.soundgate.com)

Rev 20080404

If you experience problems, call SoundGate Technical Support at 800-256-0808, or email us at [sgtech@soundgate.com](mailto:sgtech@soundgate.com).

## Before You Begin



### WARNING

#### DO NOT DISASSEMBLE OR ALTER

Doing so may result in an accident, fire, or electric shock.

#### Do not block your view

Do not mount product or any added audio/video equipment where it can block your view through the windshield or block your view of dashboard indicators and displays.

#### Do not block safety devices

Do not mount product or any added audio/video equipment where it can obstruct the operation of any safety device, such as the airbag.

#### Distraction warning

Do not allow product or any added audio/video equipment to distract you while you are driving.

#### BEFORE WIRING, DISCONNECT THE CABLE FROM THE NEGATIVE BATTERY TERMINAL

Before starting any installation work, wait 90 seconds after turning the ignition switch to the LOCK position and disconnecting the negative (-) terminal from the battery. The supplemental restraint system (SRS), or airbag(s) is equipped with a backup power source. If installation work is started less than 90 seconds after disconnection of the negative (-) battery terminal, the SRS may deploy. When the negative (-) terminal cable is disconnected from the battery, the clock and audio systems' memory may be erased. Before starting installation work, make a record of the clock and audio systems' memory settings. When installation is complete, reset the clock and audio systems to their previous settings. Power tilt, power telescopic steering column, power seats, power mirrors, power shoulder belt anchorage, and other power accessories may or may not be equipped with a memory function; consider keeping a record of these settings as well.

When installation is complete, readjust the features to their previous settings.

Never use a backup power supply (such as another battery) during installation work in an attempt to avoid losing these memory settings.



### CAUTION

#### DO NOT ALLOW CABLES TO BECOME ENTANGLED IN SURROUNDING OBJECTS

Cables or wiring that obstruct or get caught on places such as the steering wheel, shift lever, brake pedals, etc. can be extremely hazardous.

#### DO NOT INSTALL IN LOCATIONS WITH HIGH MOISTURE OR DUST

Moisture or dust may result in product failure.

#### HAVE THE WIRING AND INSTALLATION DONE BY EXPERTS

The wiring and installation of this product requires special technical skills and experience.

#### USE ONLY SPECIFIED ACCESSORY PARTS

Use of other than specified parts may damage product internally.

#### FOLLOW THE OPERATIONAL AND INSTALLATION MANUALS.

YOU SHOULD READ AND FAMILIARIZE YOURSELF THOROUGHLY WITH THE FOLLOWING INFORMATION PRIOR TO INSTALLING AND USING THIS UNIT. IN ADDITION, YOU MUST CAREFULLY READ AND FOLLOW THE INSTALLATION SCHEMATICS AND INSTRUCTIONS FOR THE PRODUCT AND THE VEHICLE IN WHICH IT IS BEING INSTALLED. FAILURE TO FOLLOW INSTALLATION INSTRUCTIONS MAY DAMAGE THE PRODUCT AND THE VEHICLE, WILL VOID THE PRODUCT WARRANTY, AND MAY VOID THE VEHICLE WARRANTY.

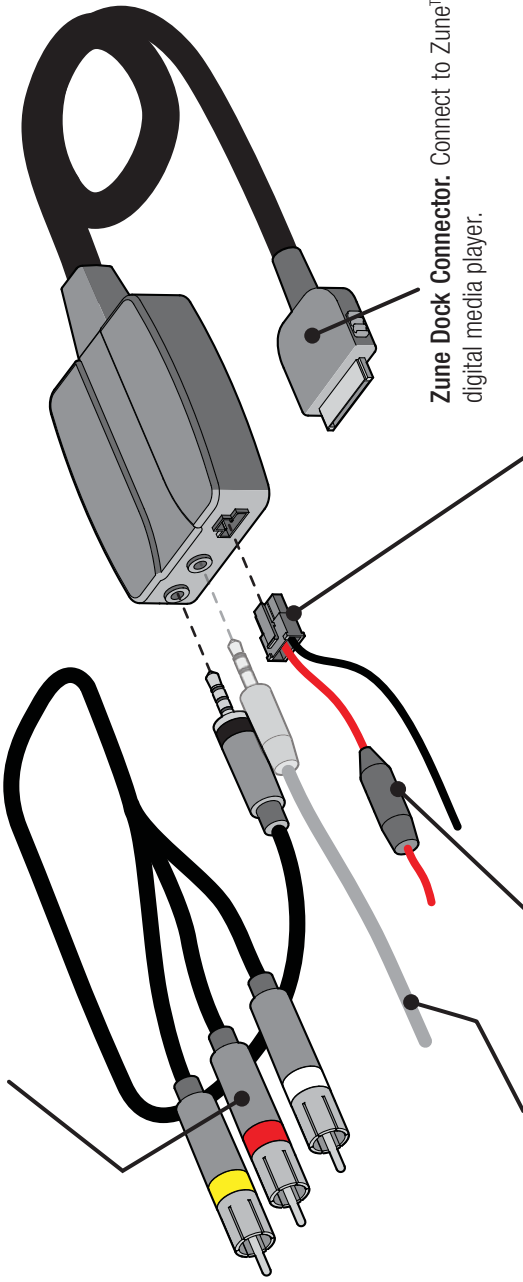
#### CHECK YOUR LOCAL LAWS

Some States/Provinces or other governmental jurisdictions (such as cities) may have laws that prohibit the operation of a video screen within the sight of the driver. If you have purchased such a product, you should use the product only in locations where it is legal to do so, and if you do use the product, set up the screen so it is only visible to passengers.

#### TROUBLESHOOTING

Should this product fail to operate properly, please contact your Dealer or SoundGate Technical Support at 800-256-0808.

**RCA component AV outputs.** Yellow = Video, Red = Audio Right, White = Audio Left. Connect the audio outputs to the matching locations of the HONZNAUX1 components on the next page



**Zune Dock Connector.** Connect to Zune™ digital media player.

**Power connector.** Connect black wire to bare-metal chassis. Connect red wire to a +12V switched (ignition) power source.

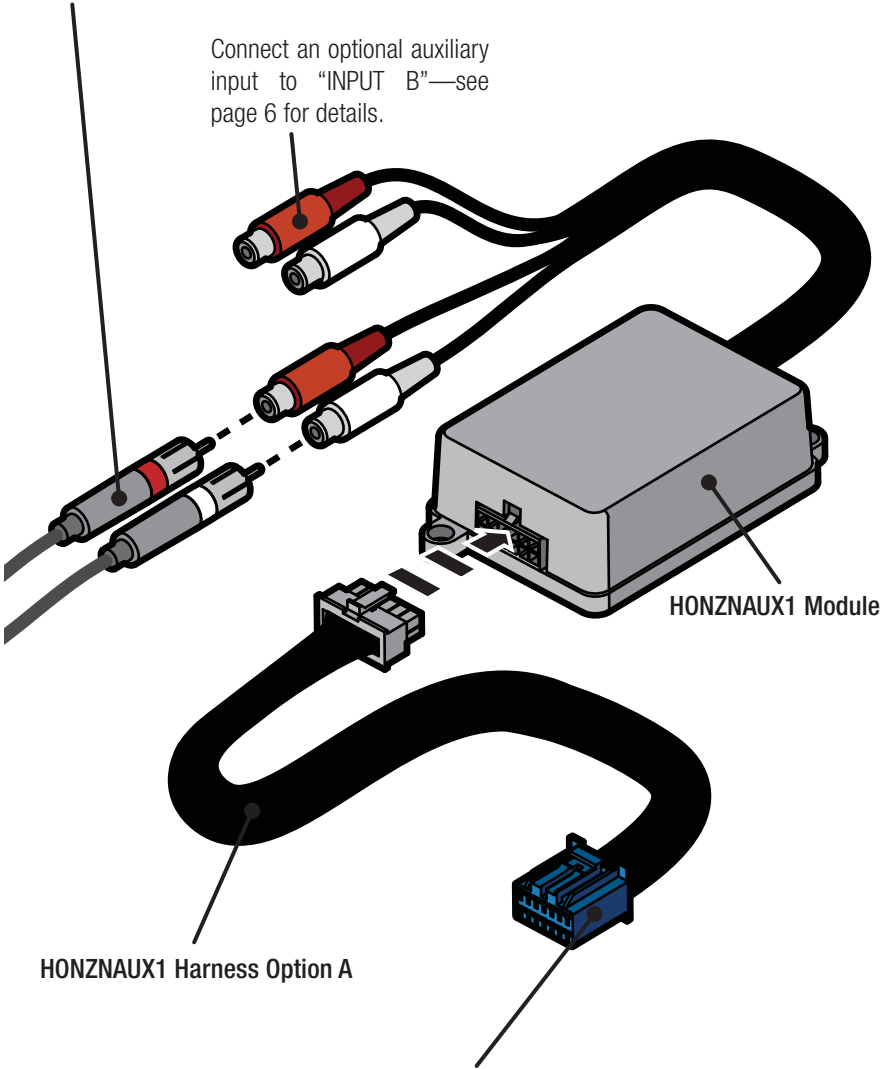
**Inline fuse.** The red wire of the power connector is fused to protect your Zune device and vehicle systems. The red wire requires a 12V, 1500mA fuse.

**Optional remote control (available separately).** Allows full control of a connected Zune device's functions

## HONZNAUX1 Option A

Connect the male RCA Left (white) and Right (red) audio cables (from the component-set on page 3) to "INPUT A" on the HONZNAUX1 module—please read page 6 for details.

Connect an optional auxiliary input to "INPUT B"—see page 6 for details.

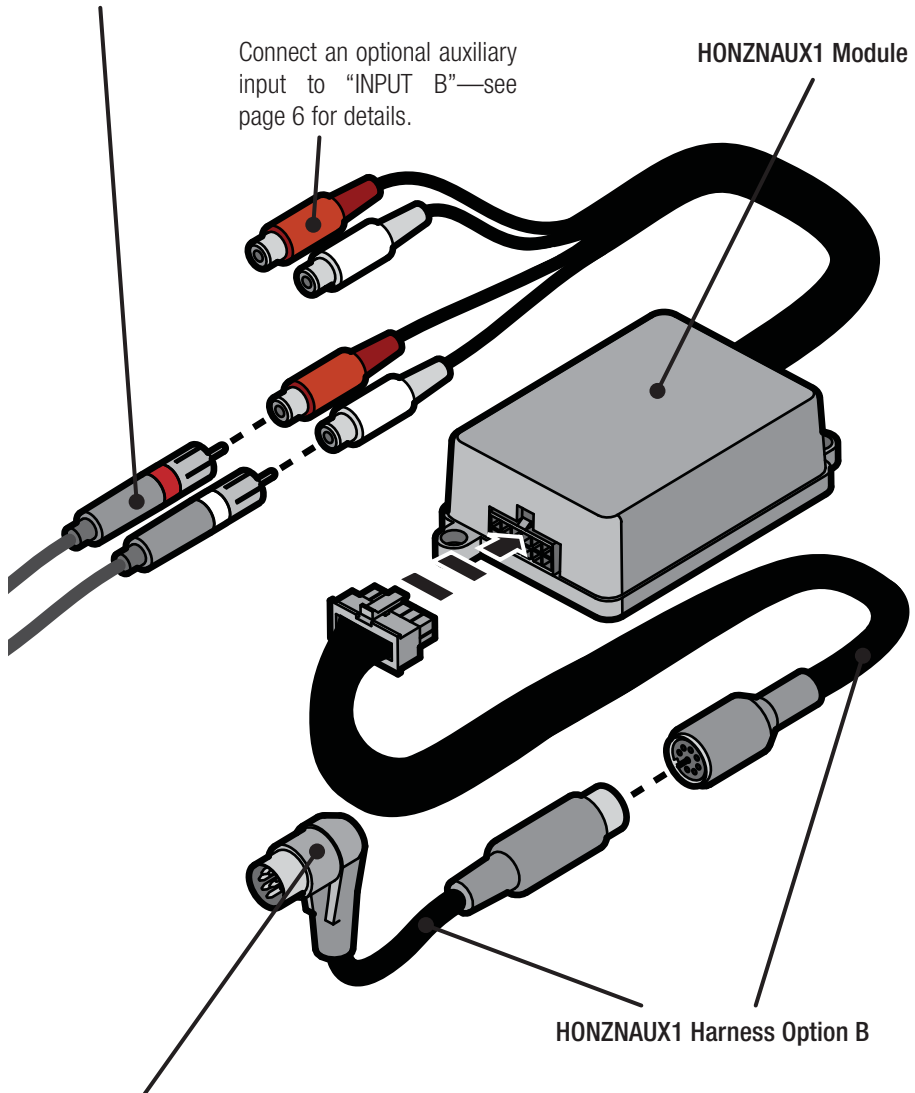


HONZNAUX1 Module

HONZNAUX1 Harness Option A

**14-pin Male Connector.** Remove your factory radio and connect the 14-pin male connector to the rear panel. Read the instructions on page 6 for further details.

Connect the male RCA Left (white) and Right (red) audio cables (from the component-set on page 3) to "INPUT A" on the HONZNAUX1 module—please read page 6 for details.





**8-pin Male DIN Connector.** Remove your factory radio and connect the 8-pin male DIN connector to the rear panel. Read the instructions on page 6 for further details.

**BEFORE YOU BEGIN:**

1. Turn the ignition off.
2. Ensure the factory radio is turned off.

**Installation**

**STEP 1**  **Gain access to the factory radio's rear panel.** The HONZNAUX1 connects directly to the rear panel of the factory radio. Full or partial disassembly of the dash will be necessary. If you are unsure of this procedure, please consult a factory service manual or have the work performed by a mobile electronics specialist. Pay special attention to warnings or instructions regarding working near airbags, other safety devices, or security systems.

**STEP 2**  **Connect the HONZNAUX1 harness to the factory radio.** The HONZNAUX1 comes with two vehicle-specific harnesses. Carefully review both harness options on pages 4 and 5 and compare both harnesses with the connectors on your factory radio's rear panel. Use the harness that matches your radio's connectors. Plug the male connector of the appropriate HONZNAUX1 harness into the matching location on the factory radio's rear panel.

**STEP 3**  **Assemble the components shown on page 3 and connect them to the HONZNAUX1 module.** Use the diagrams on pages 3-5 to assemble the components that will connect to and control your Zune device.

**Power connector wiring.** Connect the black wire of the power connector shown on page 3 to a clean, bare-metal chassis ground. When in doubt, measure the resistance between potential grounding points and the vehicle battery using a multimeter. Choose a grounding point with equivalent resistance as other grounded components in the audio system. Connect the red wire to a +12V switched (ignition) power source. This wire requires a 12V, 1500mA inline fuse. **MAKE CERTAIN THAT REPLACEMENT FUSES MATCH THESE SPECIFICATIONS.**

**RCA connections.** The HONZNAUX1 module has two pairs of female RCA connectors labelled "INPUT A" and "INPUT B". For simplicity, connect the male RCA audio cables (from the RCA component A/V output breakout shown on page 3) to the female RCA connectors labelled "INPUT A"; this connects your Zune device to "INPUT A". You may optionally connect an additional low-level audio input source to "INPUT B".

STEP

4

**Mount all components.** Mount the HONZNAUX1 module behind or under the dash (mounting hardware not included). Be careful not to drill into wiring or vehicle mechanisms. You are solely responsible for securely fastening the HONZNAUX1 in your vehicle. Make certain that wires and cables cannot be damaged by screws, clips, or sharp, exposed pieces of metal.

Ensure that the Zune dock connector is left in a convenient place for connection to your Zune device. Plug the Zune dock connector in straight. Do not insert the connector at an angle or wiggle the connector during insertion.

Please read the **Operation** section below and test the installation before reassembling the vehicle dash, trim panels, and audio systems.

## Operation

### Controlling your Zune device

The HONZNAUX1 will not provide control of your Zune device unless you attach the optional remote, which is available separately. Please visit [www.soundgate.com](http://www.soundgate.com) or your local mobile audio dealer for details on the HONZNAUX1 remote's availability.

### HONZNAUX1 Operation

- To activate the HONZNAUX1, enter CD-changer mode by pressing the factory radio's **CD** button or using the **Mode** button to switch to CD-changer mode (make sure you have music playing on your Zune Device).
- Press **Random**, **Scan**, or **Repeat** twice to switch between INPUT A (your Zune device) and INPUT B (optional auxiliary source).
- The factory radio will display **Disc1** when INPUT A (your Zune device) is selected. When INPUT B (optional auxiliary source) is selected, the factory radio will display **Disc2**.
- To deactivate the HONZNAUX1, simply source to AM/FM or the internal factory CD player.



### IMPORTANT

Some Honda/Acura radios do not support source switching from the factory radio's controls. Test your radio before reassembling the audio system; if you cannot switch between INPUT A and INPUT B, call SoundGate technical support for a solution.

SoundGate Technical Support: 1-800-256-0808

## ***Why SoundGate Dealers have the edge...***

The technologies used in today's vehicles are as sophisticated as any laptop computer. At SoundGate we believe these new technologies are full of opportunities for mobile electronic dealers across the nation. We make it a high priority to not only research these new systems, but to understand them and their impact on the aftermarket car audio industry. Armed with this knowledge, we are well equipped to help you integrate new components into these systems with our innovative, high-performance interfaces and unparalleled technical support.

## ***Be sure to ask your autosound specialist about these other exciting SoundGate products...***

- Auxiliary Input Interfaces and Docking Stations which allow you to input audio from MP3 Players, DVD/Video, Satellite Radio, and more to OEM and aftermarket car audio systems
- High-performance Radio Replacement
- Interfaces for seamlessly integrating new receivers or CD players into OEM audio systems
- Competition-Grade Interfaces for adding amplifiers
- Remote Audio Control Interfaces that let you control aftermarket receivers and CD players from your factory rear seat, or steering-wheel mounted audio controls.
- And many others!

# Simple-fi.™

**[www.soundgate.com](http://www.soundgate.com)**

Zune™ and the Zune™ logo are trademarks of the Microsoft group of companies.

Copyright© 2004-2008 SoundGate®. All Rights Reserved. SoundGate® is a registered trademark of Stillwater Designs, Inc. All other trademarks are the property of their respective owners.