

CRPDAUX2

SoundGate

Purpose

The SoundGate CRPDAUX2 lets you connect an Apple iPod directly to the factory radio in the Chrysler Corporation vehicles listed below. The CRPDAUX2 supplies power, charges your iPod, and allows for remote control of most iPod functions via the REMCORE remote (sold separately).



Features

The SoundGate CRPDAUX2 utilizes sophisticated microprocessor control, ultra-reliable surface-mount construction, and advanced software design to flawlessly integrate with Chrysler audio systems—this provides audio fidelity far superior to FM transmitters, tape-deck adapters, etc. Your iPod's audio can be selected directly from your factory radio's controls.

The CRPDAUX2 works in the following vehicles:

CHRYSLER			
300M	1999–2004	Intrepid	1998–2004
Concorde	1998–2004	DODGE (CONTINUED)	
LHS	1999–2003	Neon / SRT	2002–2005
Pacifica*	2004–2008	Ram Pickup 1500/2500/3500	2002–2005
PT Cruiser	2000–2005	Stratus	2001–2005
Sebring	2001–2006	JEEP	
Town and Country Van*	2001–2006	Grand Cherokee	1999–2004
Voyager	2002–2003	Liberty	2002–2005
DODGE		Wrangler	2003–2006
Dakota	2001–2004	PLYMOUTH	
Durango	2001–2003	Prowler	2002
Caravan / Grand Caravan*	2001–2006		

* factory DVD is disabled after CRPDAUX2 is installed.

Check www.soundgate.com for the most current compatibility information.

Simple-fi.™

If you experience problems, call SoundGate Technical Support at +1-800-256-0808, or email us at support@soundgate.com.

www.soundgate.com

Rev 20080924

WARNING

DO NOT DISASSEMBLE OR ALTER

Doing so may result in an accident, fire, or electric shock.

Do not block your view

Do not mount product or any added audio/video equipment where it can block your view through the windshield or block your view of dashboard indicators and displays.

Do not block safety devices

Do not mount product or any added audio/video equipment where it can obstruct the operation of any safety device, such as the airbag.

Distraction warning

Do not allow product or any added audio/video equipment to distract you while you are driving.

BEFORE WIRING, DISCONNECT THE CABLE FROM THE NEGATIVE BATTERY TERMINAL

Before starting any installation work, wait 90 seconds after turning the ignition switch to the LOCK position and disconnecting the negative (-) terminal from the battery. The supplemental restraint system (SRS), or airbag(s) is equipped with a backup power source. If installation work is started less than 90 seconds after disconnection of the negative (-) battery terminal, the SRS may deploy. When the negative (-) terminal cable is disconnected from the battery, the clock and audio systems' memory may be erased. Before starting installation work, make a record of the clock and audio systems' memory settings. When installation is complete, reset the clock and audio systems to their previous settings. Power tilt, power telescopic steering column, power seats, power mirrors, power shoulder belt anchorage, and other power accessories may or may not be equipped with a memory function; consider keeping a record of these settings as well.

When installation is complete, readjust the features to their previous settings.

Never use a backup power supply (such as another battery) during installation work in an attempt to avoid losing these memory settings.

CAUTION

DO NOT ALLOW CABLES TO BECOME ENTANGLED IN SURROUNDING OBJECTS

Cables or wiring that obstruct or get caught on places such as the steering wheel, shift lever, brake pedals, etc. can be extremely hazardous.

DO NOT INSTALL IN LOCATIONS WITH HIGH MOISTURE OR DUST

Moisture or dust may result in product failure.

HAVE THE WIRING AND INSTALLATION DONE BY EXPERTS

The wiring and installation of this product requires special technical skills and experience.

USE ONLY SPECIFIED ACCESSORY PARTS

Use of other than specified parts may damage product internally.

FOLLOW THE OPERATIONAL AND INSTALLATION MANUALS.

YOU SHOULD READ AND FAMILIARIZE YOURSELF THOROUGHLY WITH THE FOLLOWING INFORMATION PRIOR TO INSTALLING AND USING THIS UNIT. IN ADDITION, YOU MUST CAREFULLY READ AND FOLLOW THE INSTALLATION SCHEMATICS AND INSTRUCTIONS FOR THE PRODUCT AND THE VEHICLE IN WHICH IT IS BEING INSTALLED. FAILURE TO FOLLOW INSTALLATION INSTRUCTIONS MAY DAMAGE THE PRODUCT AND THE VEHICLE, WILL VOID THE PRODUCT WARRANTY, AND MAY VOID THE VEHICLE WARRANTY.

CHECK YOUR LOCAL LAWS

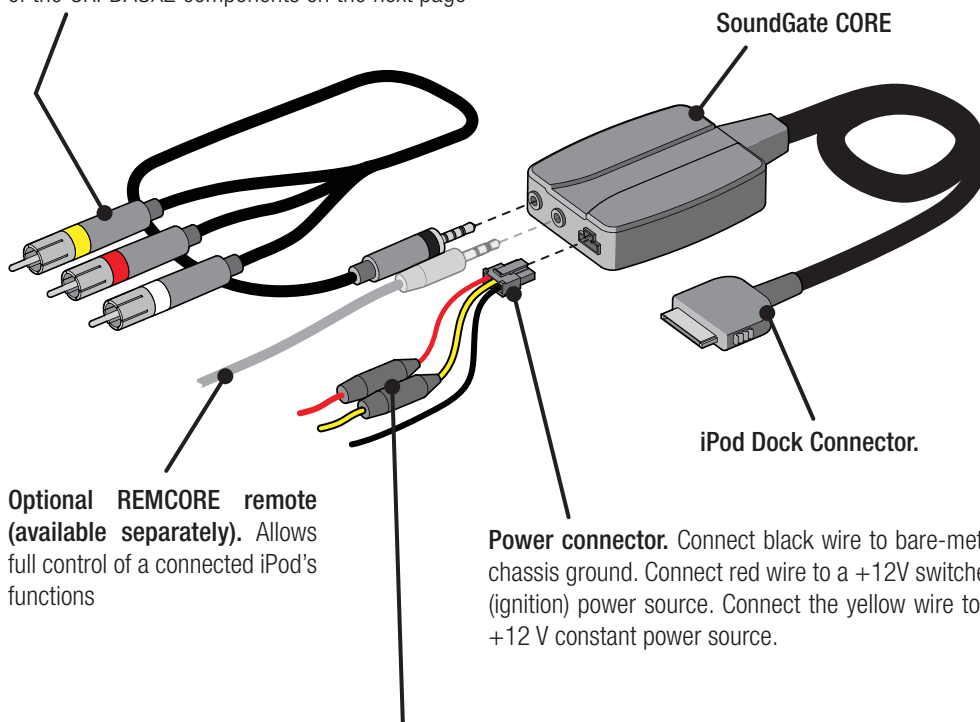
Some States/Provinces or other governmental jurisdictions (such as cities) may have laws that prohibit the operation of a video screen within the sight of the driver. If you have purchased such a product, you should use the product only in locations where it is legal to do so, and if you do use the product, set up the screen so it is only visible to passengers.

TROUBLESHOOTING

Should this product fail to operate properly, please contact your Dealer or SoundGate Technical Support via email at sgtech@soundgate.com or via phone at +1-800-256-0808.

CRPDAUX2 Overview

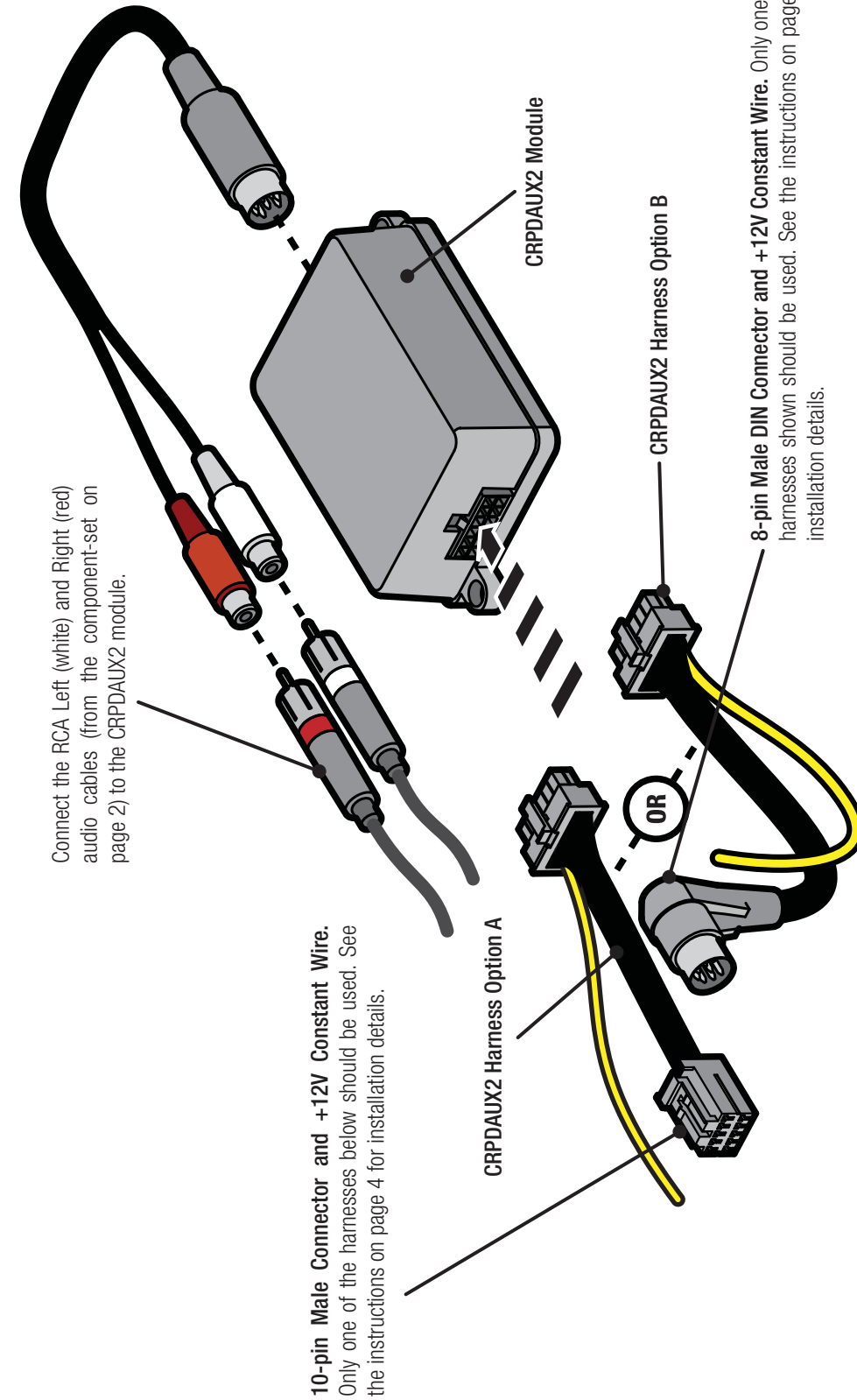
RCA component A/V outputs. Yellow = Video, Red = Audio Right, White = Audio Left. Connect the audio outputs to the matching locations of the CRPDAUX2 components on the next page



Optional REMCORE remote (available separately). Allows full control of a connected iPod's functions

Power connector. Connect black wire to bare-metal chassis ground. Connect red wire to a +12V switched (ignition) power source. Connect the yellow wire to a +12 V constant power source.

Inline fuses. The red and yellow wires of the power connector are fused to protect your iPod and vehicle systems. The red wire requires a 12V, 500mA fuse. The yellow wire requires a 12V, 1 ampere fuse.



Connect the RCA Left (white) and Right (red) audio cables (from the component-set on page 2) to the CRPDAUX2 module.

10-pin Male Connector and +12V Constant Wire. Only one of the harnesses below should be used. See the instructions on page 4 for installation details.

8-pin Male DIN Connector and +12V Constant Wire. Only one of the harnesses shown should be used. See the instructions on page 4 for installation details.

BEFORE YOU BEGIN:

1. Turn the ignition off.
2. Ensure the factory radio is turned off.

Installation

STEP 1 Gain access to the factory radio's rear panel. The CRPDAUX2 connects directly to the rear panel of the factory radio. Full or partial disassembly of the dash will be necessary. If you are unsure of this procedure, please consult a factory service manual or have the work performed by a mobile electronics specialist. Pay special attention to warnings or instructions regarding working near airbags, other safety devices, or security systems.

STEP 2 Connect the appropriate CRPDAUX2 harness to the factory radio. The CRPDAUX2 comes with two vehicle-specific harnesses. Carefully review both harness options on page 3 and compare both harnesses with the connectors on your factory radio's rear panel. Use only the harness that matches your radio's connectors (the remaining harness will not be used). Plug the male connector of the appropriate CRPDAUX2 harness into the matching location on the factory radio's rear panel.

Both harness options have an attached yellow wire that must be connected to a constant +12V power source (vehicle battery). We **DO NOT** recommend the +12V constant in the factory radio harness due to the possibility of excessive voltage drop during vehicle starting.

STEP 3 Assemble the components shown on page 2 and connect them to the CRPDAUX2 module. Use the diagrams on pages 2 and 3 to assemble the components that will connect to and control your iPod.

Power connector wiring. Connect the black wire of the power connector shown on page 3 to a clean, bare-metal chassis ground. When in doubt, measure the resistance between potential grounding points and the vehicle battery using a multimeter. Choose a grounding point with equivalent resistance as other grounded components in the audio system. Connect the red wire to a +12V switched (ignition) power source. Connect the yellow wire to a +12V constant power source. The red wire requires a 12V, 500mA inline fuse; the yellow wire requires a 12V, 1 ampere fuse. **MAKE CERTAIN THAT REPLACEMENT FUSES MATCH THESE SPECIFICATIONS.**

STEP 4 Mount all components. Mount the CRPDAUX2 module behind or under the dash (mounting hardware not included). Be careful not to drill into wiring or vehicle mechanisms. You are solely responsible for securely fastening the CRPDAUX2 in your vehicle. Make certain that wires and cables cannot be damaged by screws, clips, or sharp, exposed pieces of metal.

Ensure that the iPod dock connector is left in a convenient place for connection to your iPod. Plug the iPod dock connector in straight. Do not insert the connector at an angle or wiggle the connector during insertion.

Please read the **Operation** section on the following page and test the installation before reassembling the vehicle dash, trim panels, and audio systems.

iPod Details

The CRPDAUX2 works with any 3rd generation and newer iPod with a dock connector, including the iPod Touch and iPhone.

iPod Charging

While the ignition is turned on, the CORE charges your iPod. Once the ignition is turned off, the CORE pauses the iPod, charges it for 10 minutes, then puts the iPod into sleep mode.

Controlling your iPod

The CRPDAUX2 will not provide control of your iPod unless you attach the optional REMCORE remote, which is available separately. Please visit www.soundgate.com or your local mobile audio dealer for details on REMCORE availability.

Activating the CRPDAUX2

1. Turn on the ignition and factory radio.
2. Ensure that your iPod is connected and playing audio.
3. Wait several seconds for the factory radio and the CRPDAUX2 to synchronize. Press the **MODE** button on your factory radio.

*The factory radio's display will report **Disc 1, Track 1**—you should hear audio from your iPod through your vehicle's audio system.*

NOTE

If the radio's display does not report **Disc 1, Track 1** after pressing the **MODE** button and you do not hear music from your iPod, turn the radio and ignition off. Disconnect the CRPDAUX2 harness from the factory radio's rear panel. Wait 30 seconds, then reconnect the harness. Repeat steps 1–3 above.

This initialization process, if necessary at all, will only need to be performed during the initial installation.

4. To deactivate the CRPDAUX2 and switch your radio back to its normal mode, simply press the **MODE** button.

Troubleshooting

To activate the iPod's video output (for iPod's that support TV Out):

1. Go to Videos > Settings.
2. Set the **TV Out** option to **Ask** or **On**.
3. Adjust the **TV Signal** and **TV Screen** options to match your video input device.

If your iPod is frozen or will not turn on, try resetting your iPod, using these instructions:

1. Toggle the **Hold** switch on, then off.
2. Press and hold the **Menu** and **Center** buttons simultaneously until the Apple logo appears. On older iPods, press the **Play/Pause** and **Menu** buttons. On the iPod Touch and iPhone, press the **Menu** and **Sleep** buttons.
3. If you're still having problems, you may need to recharge your iPod with a wall charger or your computer.
4. If your iPod won't mount on your computer or take a charge, the battery may need to be completely drained. Put the iPod aside for 24 hours, then try charging again.

Troubleshooting continued

If your iPod's battery has completely drained:

Connect the iPod to a wall charger or your computer as soon as possible and perform a full charge. If the iPod will not charge, try the reset method above.

If you have further iPod battery, charging, or other problems, contact Apple tech support.



Why SoundGate Dealers have the edge...

The technologies used in today's vehicles are as sophisticated as any laptop computer. At SoundGate we believe these new technologies are full of opportunities for mobile electronic dealers across the nation. We make it a high priority to not only research these new systems, but to understand them and their impact on the aftermarket car audio industry. Armed with this knowledge, we are well equipped to help you integrate new components into these systems with our innovative, high-performance interfaces and unparalleled technical support.

Ask your autosound specialist about these other exciting SoundGate products...

- Auxiliary Input Interfaces and Docking Stations which allow you to input audio from MP3 Players, DVD/Video, Satellite Radio, and more to OEM and aftermarket car audio systems
- High-performance Radio Replacement
- Interfaces for seamlessly integrating new receivers or CD players into OEM audio systems
- Competition-Grade Interfaces for adding amplifiers
- Remote Audio Control Interfaces that let you control aftermarket receivers and CD players from your factory rear seat, or steering-wheel mounted audio controls.
- And many others!

Simple-fi.™

www.soundgate.com

iPod is a trademark of Apple Computer, Inc., registered in the U.S. and other countries.

Copyright© 2004-2008 SoundGate®. All Rights Reserved. SoundGate® is a registered trademark of Stillwater Designs, Inc. All other trademarks are the property of their respective owners.