

MBPDAUX1

SoundGate®

Purpose

The SoundGate MBPDAUX1 lets you connect an Apple iPod directly to the factory radio in 1994–1998 Mercedes-Benz vehicles. The MBPDAUX1 supplies power, charges your iPod, and allows for remote control of most iPod functions via the REMCORE remote (sold separately).



Features

The SoundGate MBPDAUX1 utilizes sophisticated microprocessor control, ultra-reliable surface-mount construction, and advanced software design to flawlessly integrate with factory audio systems—this provides audio fidelity far superior to FM transmitters, tape-deck adapters, etc. Your iPod's audio can be selected directly from your factory radio's controls.

The MBPDAUX1 works in the following vehicles:

MERCEDES-BENZ

All 1994–1995 with BE1492 or CM2294 radio

All 1995–1998 with BE1692 or CM2296 or CM2396 radio



IMPORTANT

Most 1996–1998 Mercedes-Benz E and S class vehicles (*excluding SL*) equipped with **Becker BE1692** radios will require an external switch for switching between your iPod and an optional auxiliary source. Contact SoundGate technical support for further details.

SoundGate Technical Support: +1-800-256-0808

Simple-fi.™

www.soundgate.com

Rev 20080912

If you experience problems, call SoundGate Technical Support at 800-256-0808, or email us at support@soundgate.com.

Before You Begin



WARNING

DO NOT DISASSEMBLE OR ALTER

Doing so may result in an accident, fire, or electric shock.

Do not block your view

Do not mount product or any added audio/video equipment where it can block your view through the windshield or block your view of dashboard indicators and displays.

Do not block safety devices

Do not mount product or any added audio/video equipment where it can obstruct the operation of any safety device, such as the airbag.

Distraction warning

Do not allow product or any added audio/video equipment to distract you while you are driving.

BEFORE WIRING, DISCONNECT THE CABLE FROM THE NEGATIVE BATTERY TERMINAL

Before starting any installation work, wait 90 seconds after turning the ignition switch to the LOCK position and disconnecting the negative (-) terminal from the battery. The supplemental restraint system (SRS), or airbag(s) is equipped with a backup power source. If installation work is started less than 90 seconds after disconnection of the negative (-) battery terminal, the SRS may deploy. When the negative (-) terminal cable is disconnected from the battery, the clock and audio systems' memory may be erased. Before starting installation work, make a record of the clock and audio systems' memory settings. When installation is complete, reset the clock and audio systems to their previous settings. Power tilt, power telescopic steering column, power seats, power mirrors, power shoulder belt anchorage, and other power accessories may or may not be equipped with a memory function; consider keeping a record of these settings as well.

When installation is complete, readjust the features to their previous settings.

Never use a backup power supply (such as another battery) during installation work in an attempt to avoid losing these memory settings.



CAUTION

DO NOT ALLOW CABLES TO BECOME ENTANGLED IN SURROUNDING OBJECTS

Cables or wiring that obstruct or get caught on places such as the steering wheel, shift lever, brake pedals, etc. can be extremely hazardous.

DO NOT INSTALL IN LOCATIONS WITH HIGH MOISTURE OR DUST

Moisture or dust may result in product failure.

HAVE THE WIRING AND INSTALLATION DONE BY EXPERTS

The wiring and installation of this product requires special technical skills and experience.

USE ONLY SPECIFIED ACCESSORY PARTS

Use of other than specified parts may damage product internally.

FOLLOW THE OPERATIONAL AND INSTALLATION MANUALS.

YOU SHOULD READ AND FAMILIARIZE YOURSELF THOROUGHLY WITH THE FOLLOWING INFORMATION PRIOR TO INSTALLING AND USING THIS UNIT. IN ADDITION, YOU MUST CAREFULLY READ AND FOLLOW THE INSTALLATION SCHEMATICS AND INSTRUCTIONS FOR THE PRODUCT AND THE VEHICLE IN WHICH IT IS BEING INSTALLED. FAILURE TO FOLLOW INSTALLATION INSTRUCTIONS MAY DAMAGE THE PRODUCT AND THE VEHICLE, WILL VOID THE PRODUCT WARRANTY, AND MAY VOID THE VEHICLE WARRANTY.

CHECK YOUR LOCAL LAWS

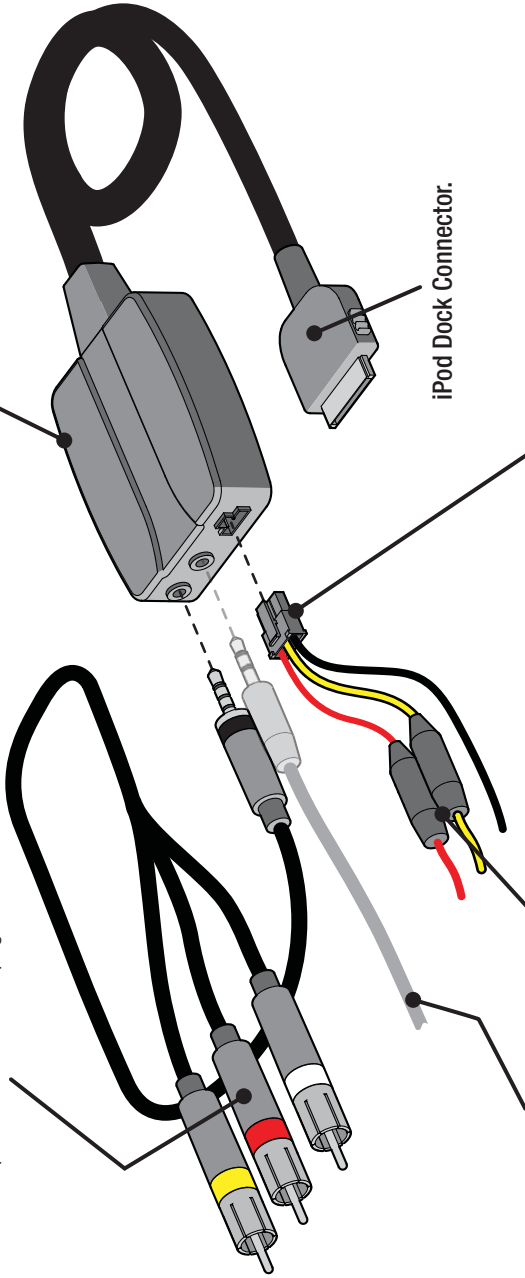
Some States/Provinces or other governmental jurisdictions (such as cities) may have laws that prohibit the operation of a video screen within the sight of the driver. If you have purchased such a product, you should use the product only in locations where it is legal to do so, and if you do use the product, set up the screen so it is only visible to passengers.

TROUBLESHOOTING

Should this product fail to operate properly, please contact your Dealer or SoundGate Technical Support at 800-256-0808.

RCA component A/V outputs. Yellow = Video, Red = Audio Right, White = Audio Left. Connect the audio outputs to the matching locations of the MBPDAUX1 components on the next page

SoundGate CORE



iPod Dock Connector.

Optional REMCORE remote (available separately). Allows full control of a connected iPod's functions

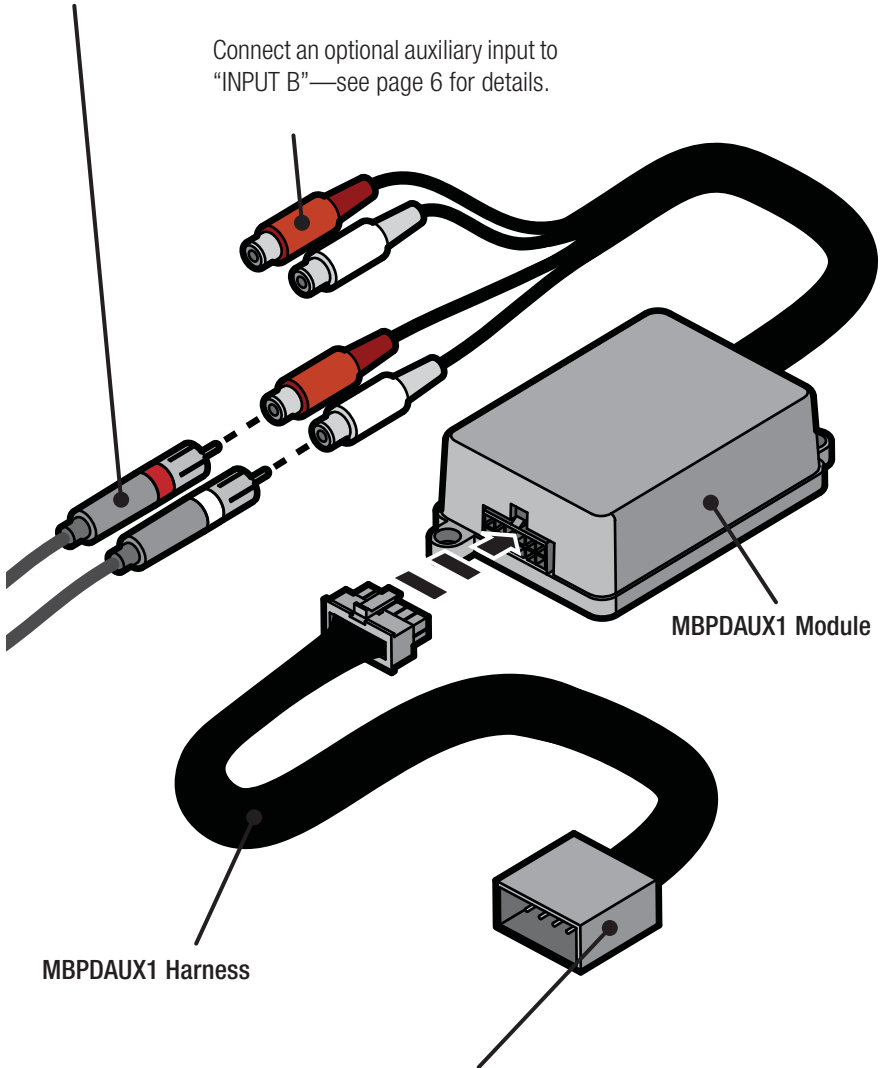
Inline fuses. The red and yellow wires of the power connector are fused to protect your iPod and vehicle systems. The red wire requires a 12V, 500mA fuse. The yellow wire requires a 12V, 1 ampere fuse.

Power connector. Connect black wire to bare-metal chassis ground. Connect red wire to a +12V switched (ignition) power source. Connect the yellow wire to a +12V constant power source.

MBPDAUX1 Overview

Connect the male RCA Left (white) and Right (red) audio cables (from the component-set on page 3) to "INPUT A" on the MBPDAUX1 module—please read page 6 for details.

Connect an optional auxiliary input to "INPUT B"—see page 6 for details.





10-pin Female Connector. Remove the factory radio and connect the 10-pin female connector to the rear panel. Read the instructions on pages 5 and 6 for further details.


BEFORE YOU BEGIN:

1. Turn the ignition off.
2. Ensure the factory radio is turned off

Installation

STEP 1  **Remove the factory radio.** The MBPDAUX1 will connect directly to the rear panel of the factory radio. Referencing the factory service manual instructions, remove the factory radio. If you feel this process is beyond your abilities, we strongly recommend having the work done by a mobile electronics specialist.

STEP 2  **Connect the MBPDAUX1 harness.** Connect the 10-pin female connector on the MBPDAUX1 harness to the matching location on the factory radio's rear panel.

STEP 3  **Assemble the components shown on page 3 and connect them to the MBPDAUX1 module.** Use the diagrams on page 3 and 4 to assemble the components that will connect to and control your iPod.

Power connector wiring. Connect the black wire of the power connector shown on page 3 to a clean, bare-metal chassis ground. When in doubt, measure the resistance between potential grounding points and the vehicle battery using a multimeter. Choose a grounding point with equivalent resistance as other grounded components in the audio system. Connect the red wire to a +12V switched (ignition) power source. Connect the yellow wire to a +12V constant power source. The red wire requires a 12V, 500mA inline fuse; the yellow wire requires a 12V, 1 ampere fuse. **MAKE CERTAIN THAT REPLACEMENT FUSES MATCH THESE SPECIFICATIONS.**

RCA connections. The MBPDAUX1 module has two pairs of female RCA connectors labeled "INPUT A" and "INPUT B". For simplicity, connect the male RCA audio cables (from the RCA component A/V output breakout shown on page 3) to the female RCA connectors labeled "INPUT A"; this connects your iPod to "INPUT A". You may optionally connect an additional low-level audio input source to "INPUT B".

STEP 4



Mount all components. Mount the MBPDAUX1 modules behind or under the dash (mounting hardware not included). Be careful not to drill into wiring or vehicle mechanisms. You are solely responsible for securely fastening the MBPDAUX1 in your vehicle. Make certain that wires and cables cannot be damaged by screws, clips, or sharp, exposed pieces of metal.

Ensure that the iPod dock connector is left in a convenient place for connection to your iPod. Plug the iPod dock connector in straight. Do not insert the connector at an angle or wiggle the connector during insertion.

Please read the **Operation** section and test the installation before reassembling the vehicle dash, trim panels, and audio systems.

Operation

iPod Details

The MBPDAUX1 works with any 3rd generation and newer iPod with a dock connector, including the iPod Touch and iPhone.

iPod Charging

While the ignition is turned on, the CORE charges your iPod. Once the ignition is turned off, the CORE pauses the iPod, charges it for 10 minutes, then puts the iPod into sleep mode.

Controlling your iPod

The MBPDAUX1 will not provide control of your iPod unless you attach the optional REMCORE remote, which is available separately. Please visit www.soundgate.com or your local mobile audio dealer for details on REMCORE availability.

MBPDAUX1 Operation

- To activate the MBPDAUX1, enter CD-changer mode by pressing the factory radio's **CD** button or using the **Mode** button to switch to CD-changer mode (make sure you have music playing on your iPod).
- Press **Random**, **Scan**, or **Repeat** twice to switch between INPUT A (your iPod) and INPUT B (optional auxiliary source).
- The factory radio will display **Disc1** when INPUT A (your iPod) is selected. When INPUT B (optional auxiliary source) is selected, the factory radio will display **Disc2**.
- To deactivate the MBPDAUX1, simply source to AM/FM or the internal factory CD player.

**IMPORTANT**

Some Mercedes-Benz radios do not support source switching from the factory radio's controls. Test your radio before reassembling the audio system; if you cannot switch between INPUT A and INPUT B, call SoundGate technical support for a solution.

SoundGate Technical Support: +1-800-256-0808

Troubleshooting

To activate the iPod's video output (for iPod's that support TV Out):

1. Go to Videos > Settings.
2. Set the **TV Out** option to **Ask** or **On**.
3. Adjust the **TV Signal** and **TV Screen** options to match your video input device.

If your iPod is frozen or will not turn on, try resetting your iPod, using these instructions:

1. Toggle the **Hold** switch on, then off.
2. Press and hold the **Menu** and **Center** buttons simultaneously until the Apple logo appears. On older iPods, press the **Play/Pause** and **Menu** buttons. On the iPod Touch and iPhone, press the **Menu** and **Sleep** buttons.
3. If you're still having problems, you may need to recharge your iPod with a wall charger or your computer.
4. If your iPod won't mount on your computer or take a charge, the battery may need to be completely drained. Put the iPod aside for 24 hours, then try charging again.

If your iPod's battery has completely drained:

Connect the iPod to a wall charger or your computer as soon as possible and perform a full charge. If the iPod will not charge, try the reset method above.

If you have further iPod battery, charging, or other problems, contact Apple tech support.

Why SoundGate Dealers have the edge...

The technologies used in today's vehicles are as sophisticated as any laptop computer. At SoundGate we believe these new technologies are full of opportunities for mobile electronic dealers across the nation. We make it a high priority to not only research these new systems, but to understand them and their impact on the aftermarket car audio industry. Armed with this knowledge, we are well equipped to help you integrate new components into these systems with our innovative, high-performance interfaces and unparalleled technical support.

Be sure to ask your autosound specialist about these other exciting SoundGate products...

- Auxiliary Input Interfaces and Docking Stations which allow you to input audio from MP3 Players, DVD/Video, Satellite Radio, and more to OEM and aftermarket car audio systems
- High-performance Radio Replacement
- Interfaces for seamlessly integrating new receivers or CD players into OEM audio systems
- Competition-Grade Interfaces for adding amplifiers
- Remote Audio Control Interfaces that let you control aftermarket receivers and CD players from your factory rear seat, or steering-wheel mounted audio controls.
- And many others!

Simple-fi.TM

www.soundgate.com

iPod is a trademark of Apple Computer, Inc., registered in the U.S. and other countries.

Copyright© 2004-2008 SoundGate®. All Rights Reserved. SoundGate® is a registered trademark of Stillwater Designs, Inc. All other trademarks are the property of their respective owners.